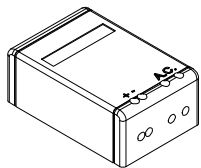
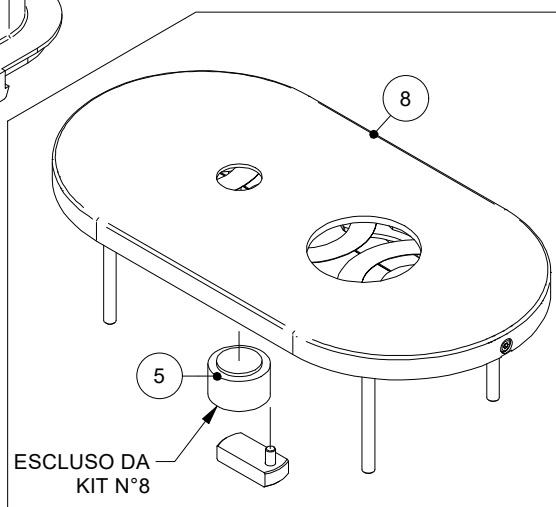
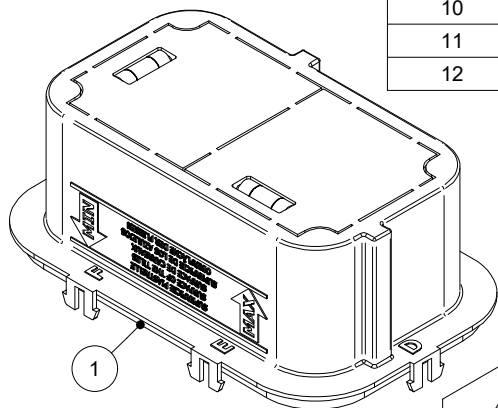


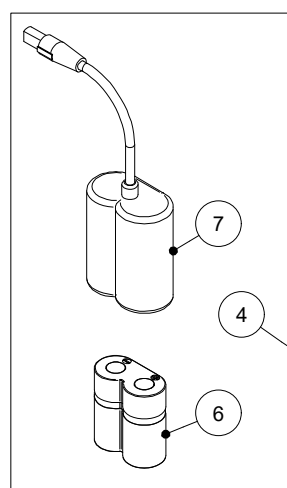
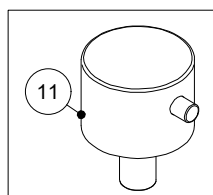
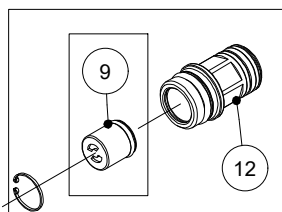
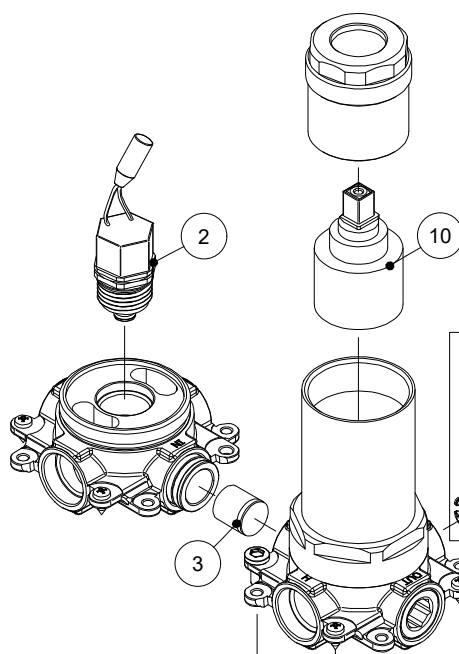
PER VERSIONE
ALIM. A RETE:
02500AL6/1



ELEMENTO	CODICE	DESCRIZIONE
1	Z01RX-56000	COPERCHIO COMPLETO PER RIC. (700.01SC)
2	02512ELV	ELETTROVALVOLA 6V PER 02512
3	Z00RX-12000	LIMITATORE DI PORTATA Ø15 8L/MIN (02079/1/978)
4	02500KAL	KIT ALIM. 6V LITIO C/CUSTODIA MORBIDA 02500CUS
5	Z00RX-09000	SENSORE IR Ø25 DOCCIA PROGRAMMABILE (02540SEN/C)
6	Z00RX-11000	BATTERIA CRP2 6V (02500BAT)
7	Z00RX-10000	CUSTODIA IN GOMMA PER BATTERIA 6V (02500CUS)
8	Z01RX-63000	KIT PIASTRA COMPLETA (700.00PS2)
9	Z00RX-05000	VALVOLA DI NON RITORNO Ø15 S/LIM. (VNR15)
10	Z00RX-07000	CARTUCCIA Ø35 MISCELATRICE C/LIM. TEMPERATURA (02084/5)
11	Z01RX-57000	MANIGLIA COMPLETA CROMATA (700.02MANC)
12	Z01RX-65000	RACCORDO COMPLETO C/VNR S/LIM. (700.10RACCOM)



ESCLUSO DA
KIT N°8



REVISIONE	DATA	DISEGNATO	VERIFICATO

SCALA: 1 : 3	FOGLIO: 1 / 1
TRATTAMENTI SUPERFICIALI:	
MATERIALE:	RAGGI NON QUOTATI: R 0.3
PESO gr :	SMUSSI NON QUOTATI: 0.5x45°
DESCR.:	TOLLERANZE GENERALI: ±0.1
MIX. ELETT. DA INCASSO DISEGNO RICAMBI	FINITURE SUPERFICIALI 3.2/ UNI ISO 1302
DATA: 17-12-21	DIS: FRANCESCO
	VER: R270
	COD. ART: 700.A4/1